



The perfect mixture of high-end luxuries that not only elevate your lifestyle but also complements your distinct personality. With architecture that astonishes the residents and the onlooker both, life at Asteria is designed considering all your desires of your dream home. It's an assurance of lavish experiences at a harmonious neighbourhood combined with world-class amenities. It's the commencement of an era that you can turn into a lifetime.



3 & 4 BHK APARTMENTS | SKYDECK DUPLEX PENTHOUSES







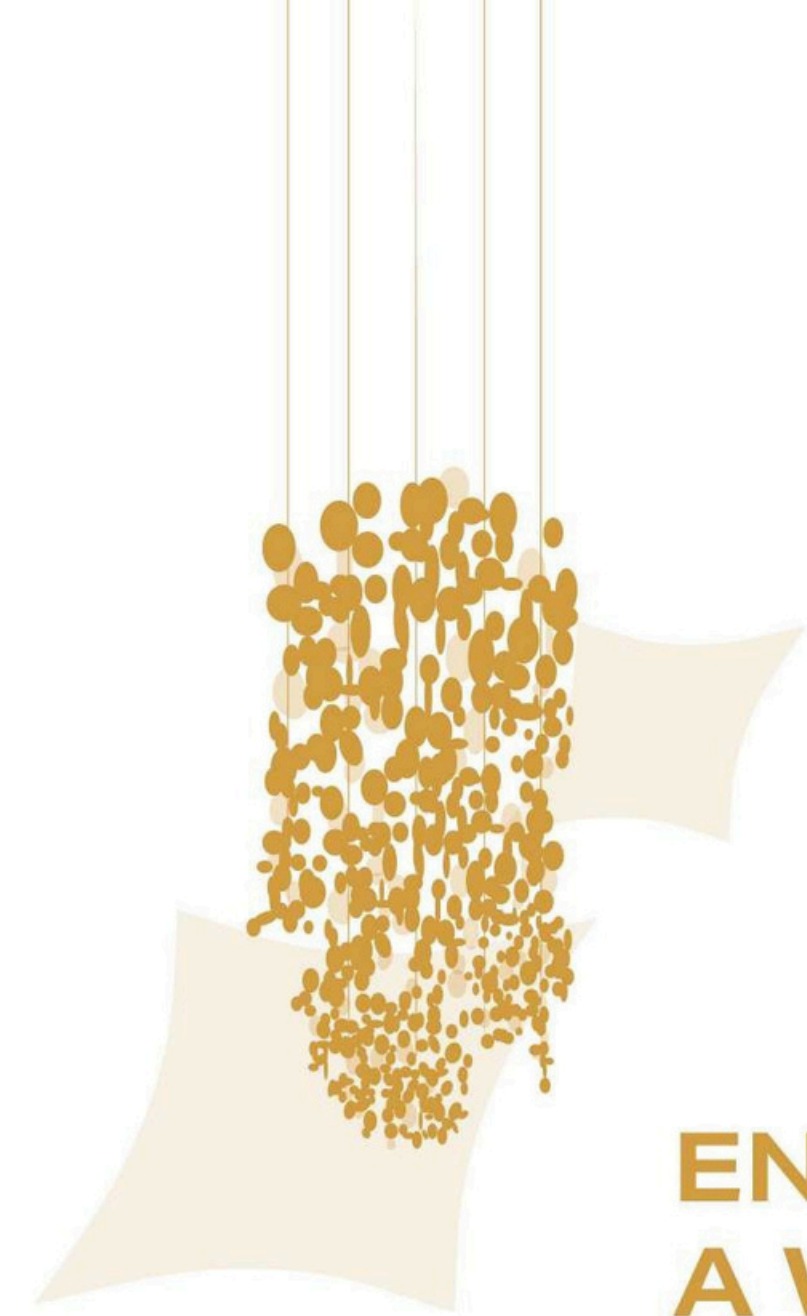
AMIDST THE BOUNTIES OF NATURE

Experience a distinct calm, right at the heart of the city.
Feel the fresh air and the abundance, everyday,
at Asteria.





ENTRANCE FOYER



ENTER INTO A WORLD OF EXCELLENCE

Build a first impression that will last, with a double-heighted entrance foyer.



IMPRESSIVELY ICONIC & STUNNINGLY SPACIOUS

Excellently designed residences with well-ventilated spaces that are thoughtfully put together.

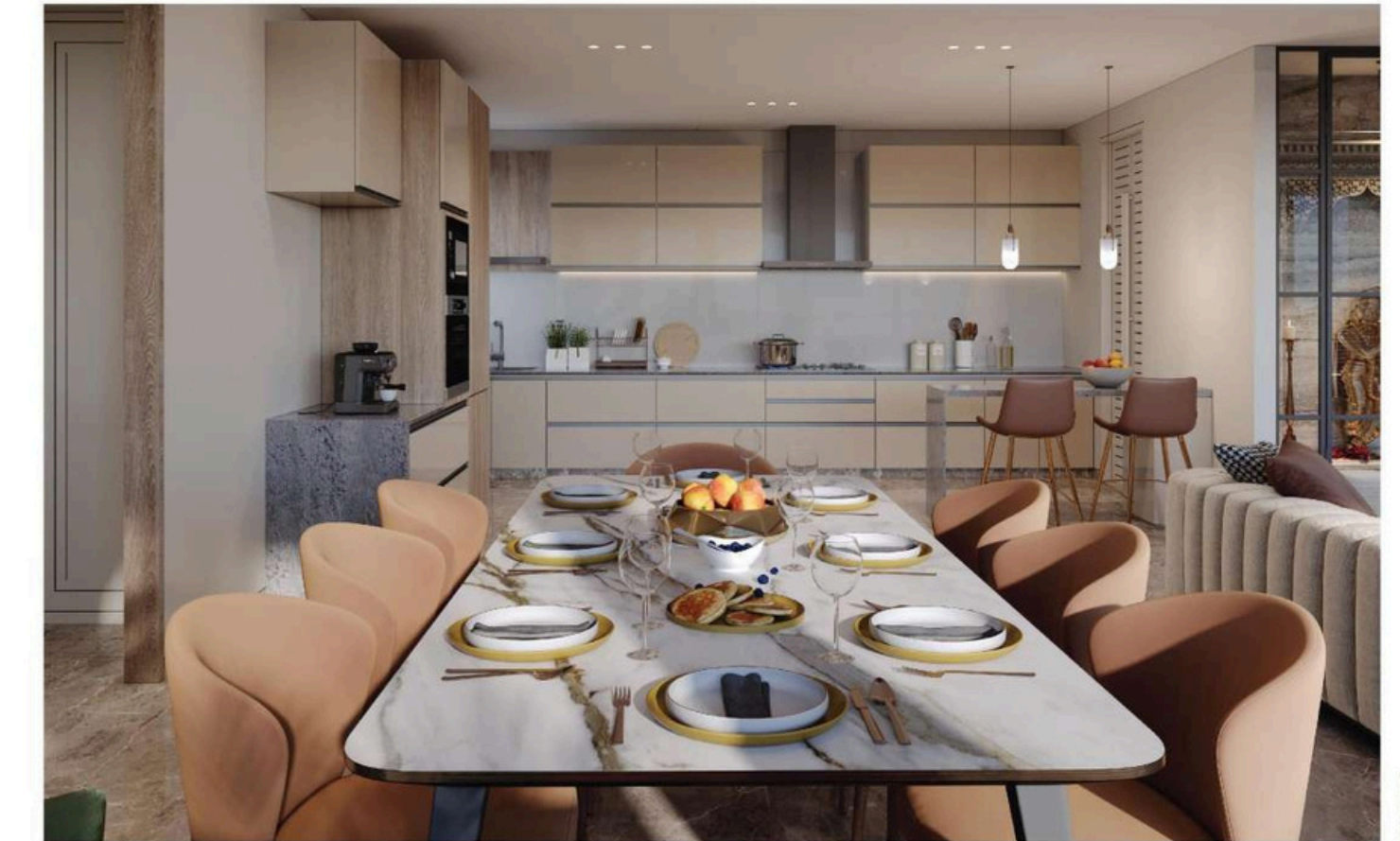


GALLERY VIEW





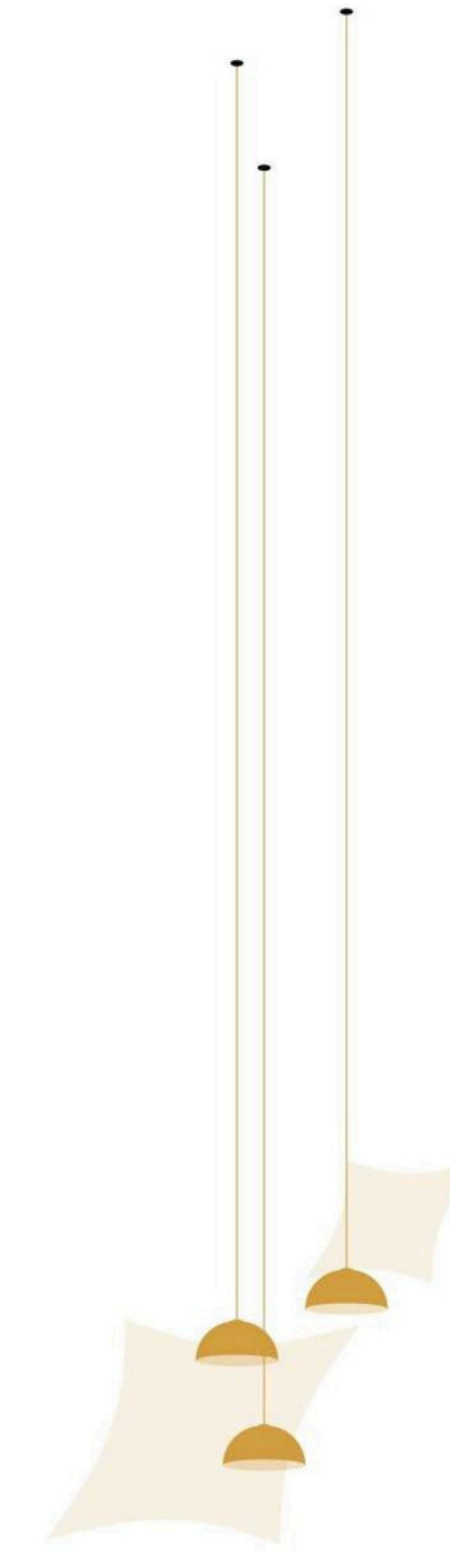
LIVING ROOM



DINING



BEDROOM



Larger, wider, and naturally lit apartments peculiarly designed for a luxurious lifestyle. Watch the lavishness unfold at an Asteria residence.



SKYDECK DUPLEX PENTHOUSES

Wake up to breath-taking views everyday. Look at life differently, in our grand duplexes curated perfectly for a splendid lifestyle.



A LIFE THAT DEFINES AN ERA



Experience the plush lifestyle with spectacular views from towers that rise high in the sky. The finest luxuries and the opulent comforts offered in every amenity is the perfect upgrade to your dream standards.



GYM

Lead a fitness focused lifestyle



BADMINTON COURT

Spaces for all your favourite sports



INDOOR GAMES

Spaces for all your favourite sports

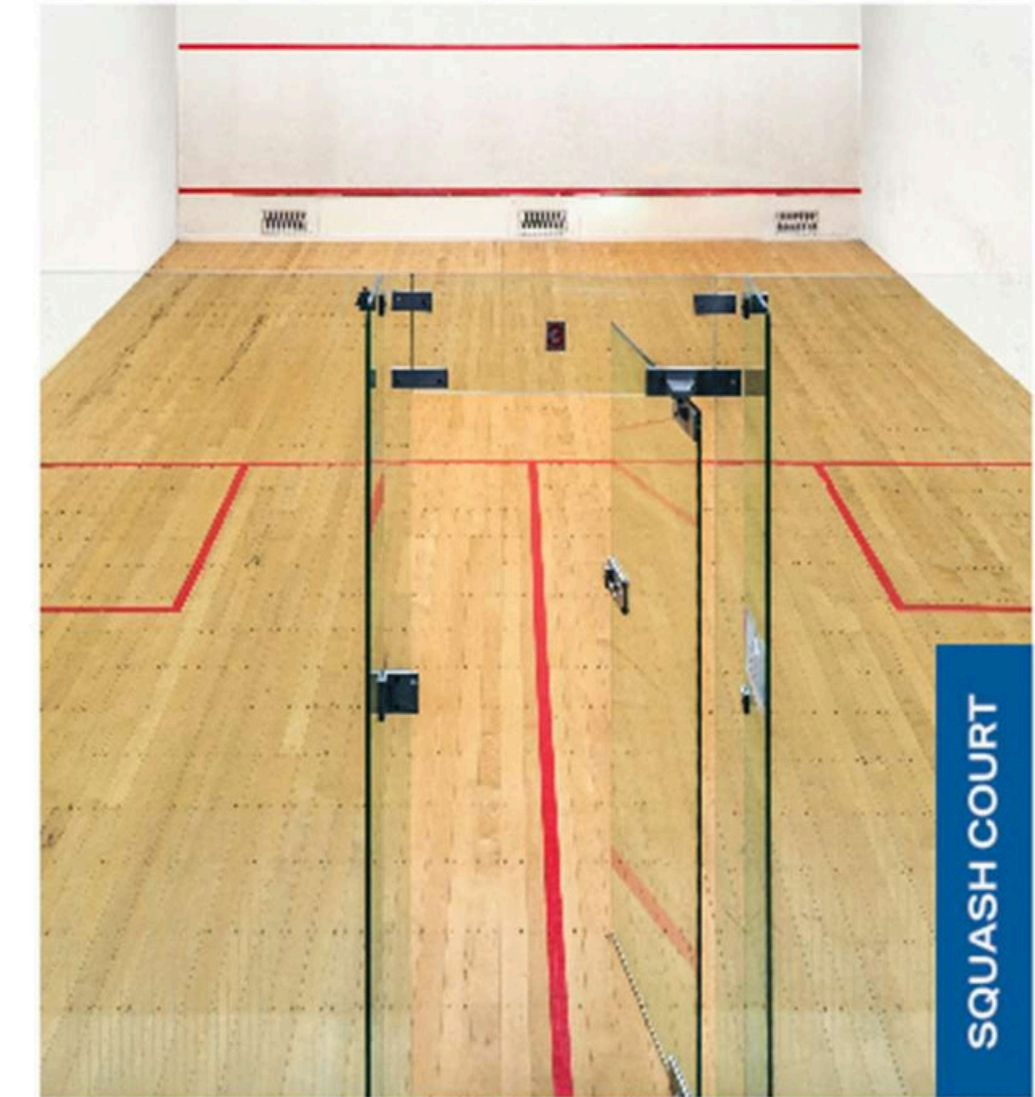


SWIMMING POOL

DIVE INTO
THE WORLD
OF LEISURE



HOME THEATRE



SQUASH COURT

LIVE THE CLUB
LIFESTYLE
AT ASTERIA

Pick something that refreshes your body and mind. From the beautiful swimming pool to the book-lover's library and a mini theatre for the movie-enthusiasts, find your leisure element with amenities that create an ensemble for a relaxing lifestyle.



KIDS PLAY AREA



LIBRARY ROOM

Step into the world of comfort with a line-up of extravagant conveniences. Luxuries here provide a plethora of leisure indulgences to satisfy every whim of the heart. With an extraordinary range of amenities, you'll find every element of the club lifestyle right here, at Asteria.





BANQUET HALL



CAFETERIA

Spend time with your Coffee



SPALON AND MASSAGE

Indulge in luxurious leisure

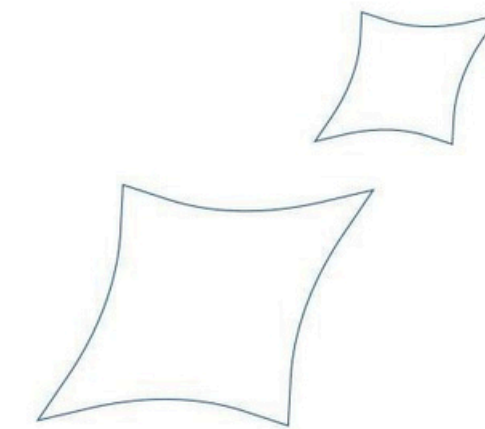


CRICKET GROUND

Find your recreational element



CHILDREN'S PLAY AREA



SPECIAL FEATURES

AN EXCLUSIVELY RESIDENTIAL PROJECT



Sip on your coffee, spend quality time, at **1100+ sq.ft. Cafeteria**



Train, play or just have fun, at the **double-heighted, standard Squash & Badminton Area**



Relax, rejuvenate and unwind, at the **Spalon & Massage Rooms**



Take a refreshing dip in the **Full-length Swimming Pool**



Go for a calming walk with **24x7 Relaxing Music** all-across



Get a safe sleep while being secured with **Video Door Phone and Digital Locks**



Pedal your way to fitness on the **500-meter Cycle Track**



Accommodate your guests & drivers at the separate **Guest Rooms & Driver Rooms**



SALIENT FEATURES



Provision of gas pipe line to each flat



Provision of 24x7 bore well water connection



Automatic standard quality elevators



Well designed lobby entrance



Attractive site entrance gate with security



Structure

- Earthquake resistant R.C.C Frame Structure



Flooring

- Wooden flooring in the master bedroom
- Branded Vitrified flooring in drawing, living, dining and kitchen areas
- Branded Vitrified flooring in all bedrooms, balcony and in store room



Wash Area

- Kota stone flooring with a dado of glazed tiles
- Provisions for R.O water, geysers and washing machine



Kitchen

- Granite Platform with quartz sink & glazed tiles dado upto lintel level



Doors

- Main door with veneer finished along with wooden frame & Security digital lock & Video door phone.
- All other doors are flush door with wooden frame



Windows

- Powder coated aluminium sliding window



Bathrooms

- GVT dado on all walls up to the lintel level Branded bathroom fittings (Grohe/Kohler) or equivalent and sanitary ware (Kohler/Duravit) or Equivalent Premium quality plumbing fittings.



Electrification

- All electrical concealed points of ISI make along with Halls RFL or Fauvalent wires & Schneider or equivalent pale branded modular switchboards



Railing

- S.S./M.S. Railing/Glass Railing

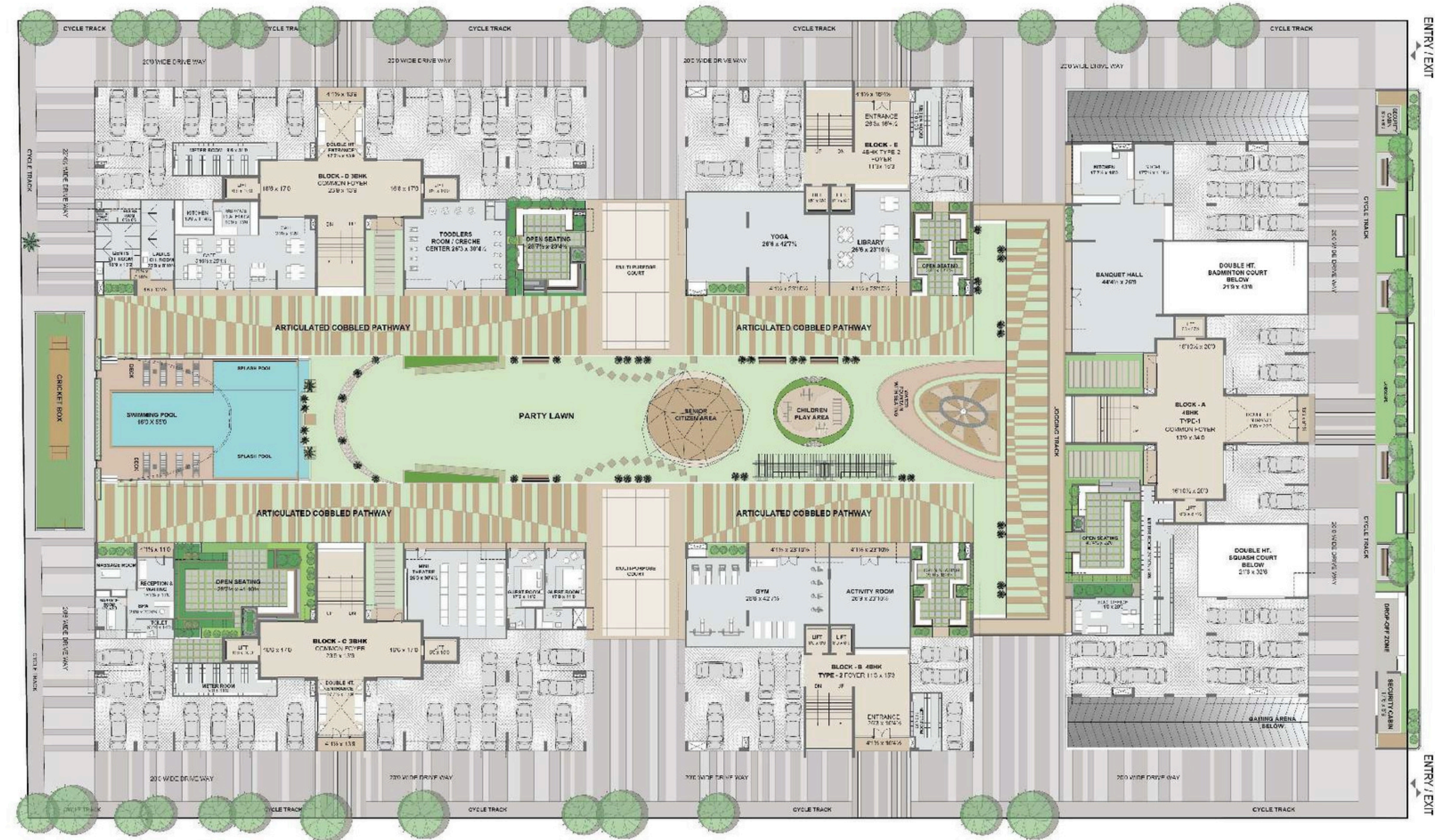


Wall Finish

- Inside single mala plaster with putty & outside double coat sand face plaster with rustic texture & 100% acrylic waterproof paint

FLOOR PLAN

GROUND FLOOR



FLOOR PLAN

1ST FLOOR



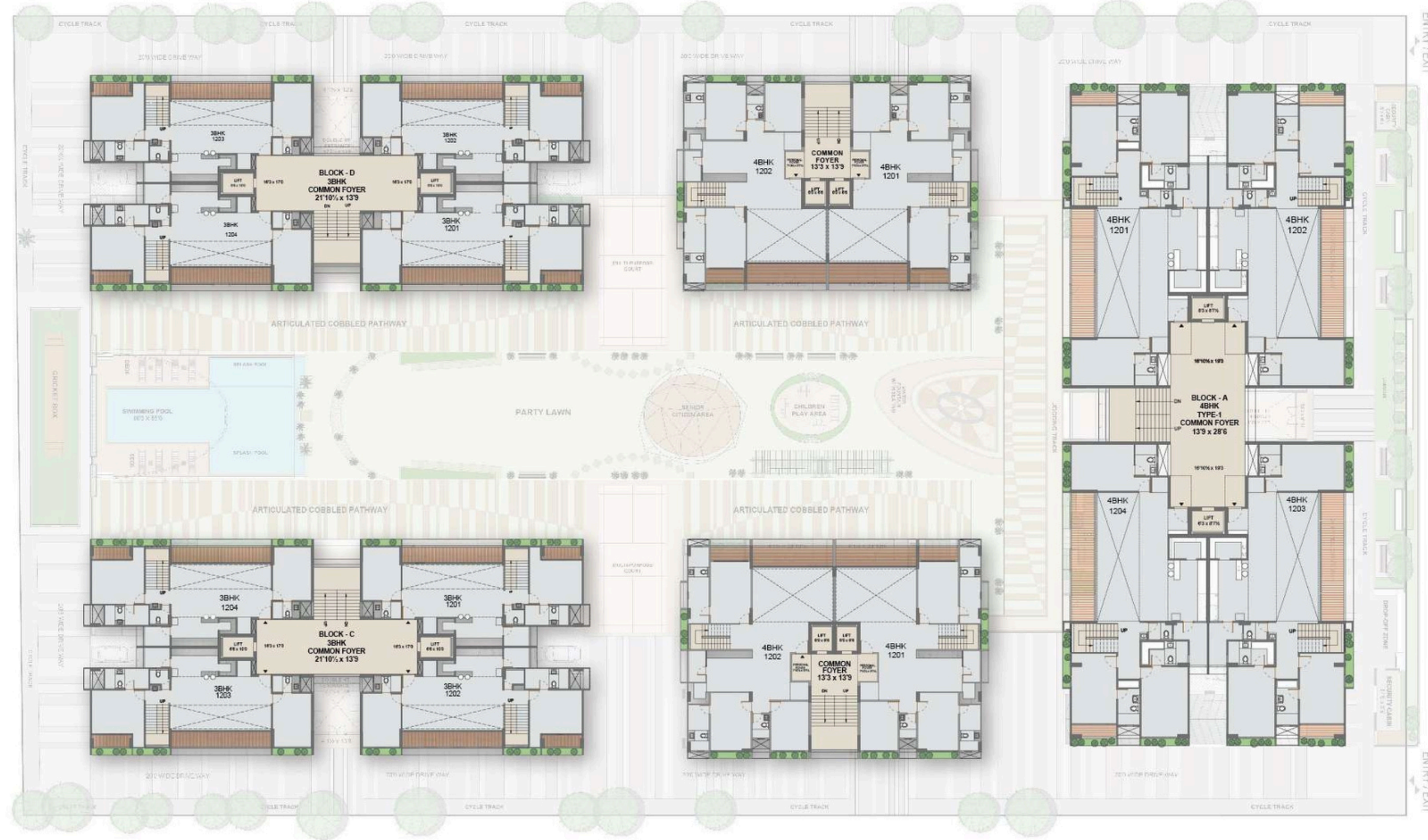
FLOOR PLAN

2ND TO 11TH FLOOR



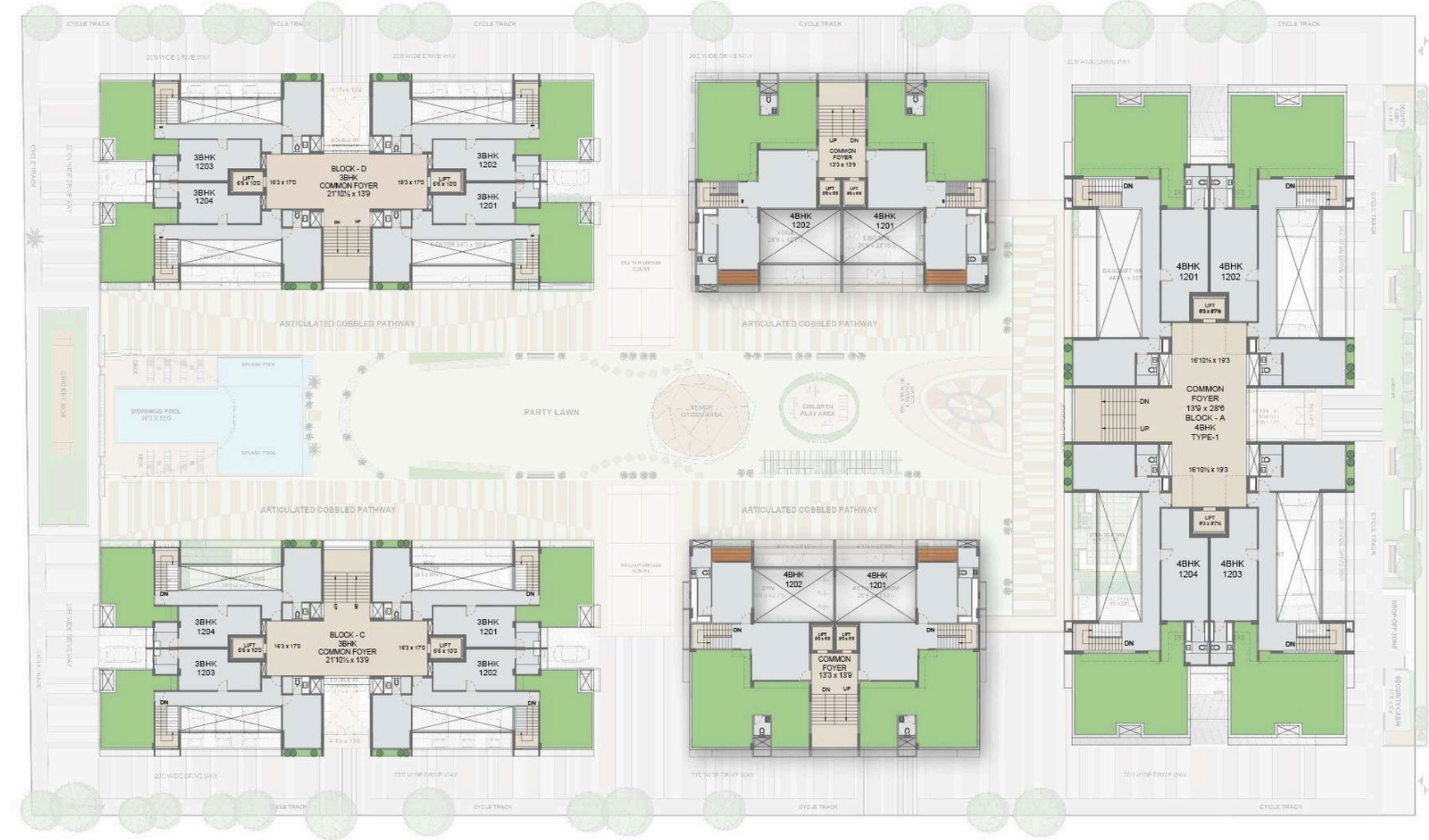
FLOOR PLAN

SKYDECK DUPLEX PENTHOUSE LOWER (12TH)



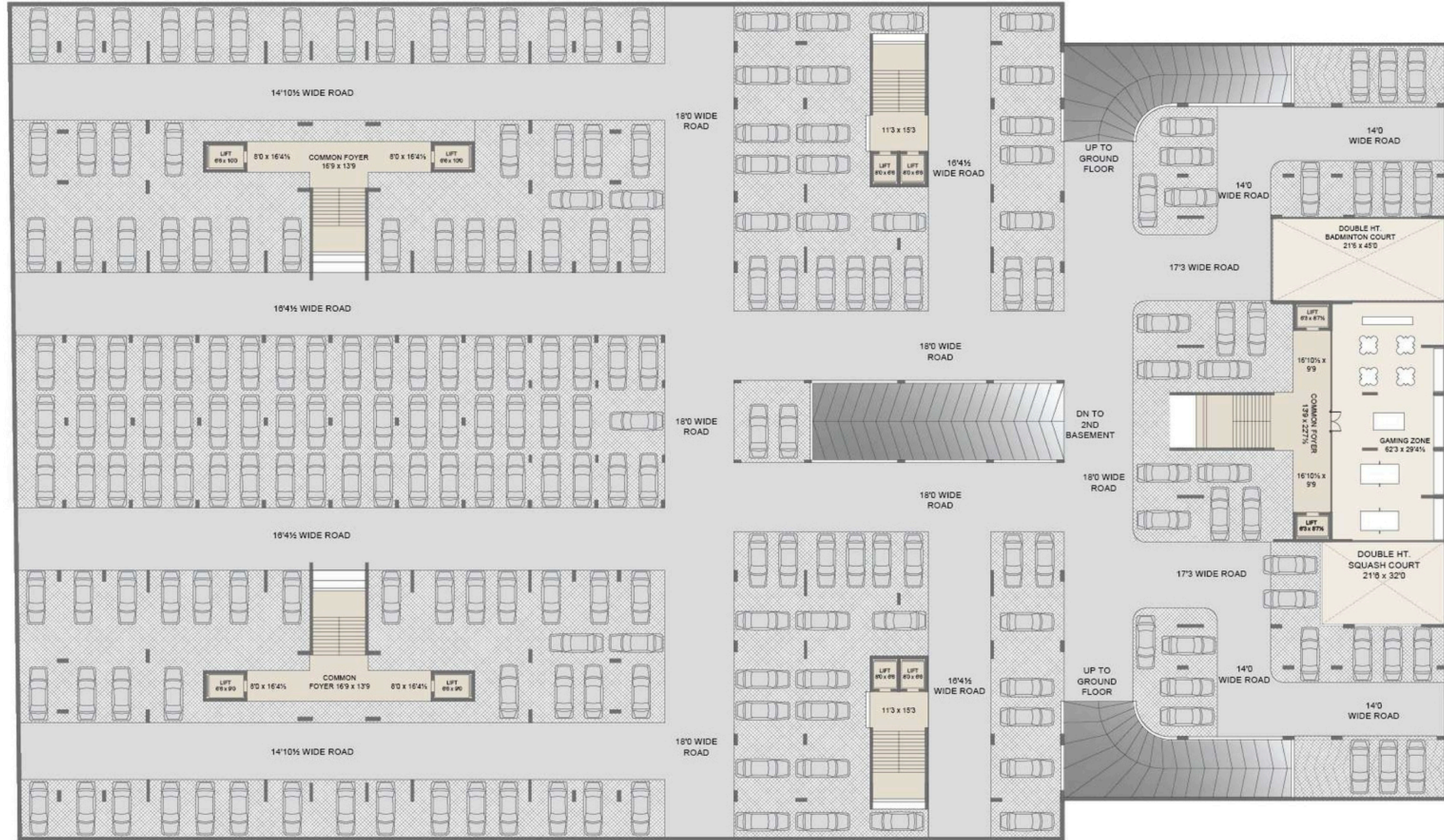
FLOOR PLAN

SKYDECK DUPLEX PENTHOUSE UPPER (13TH)



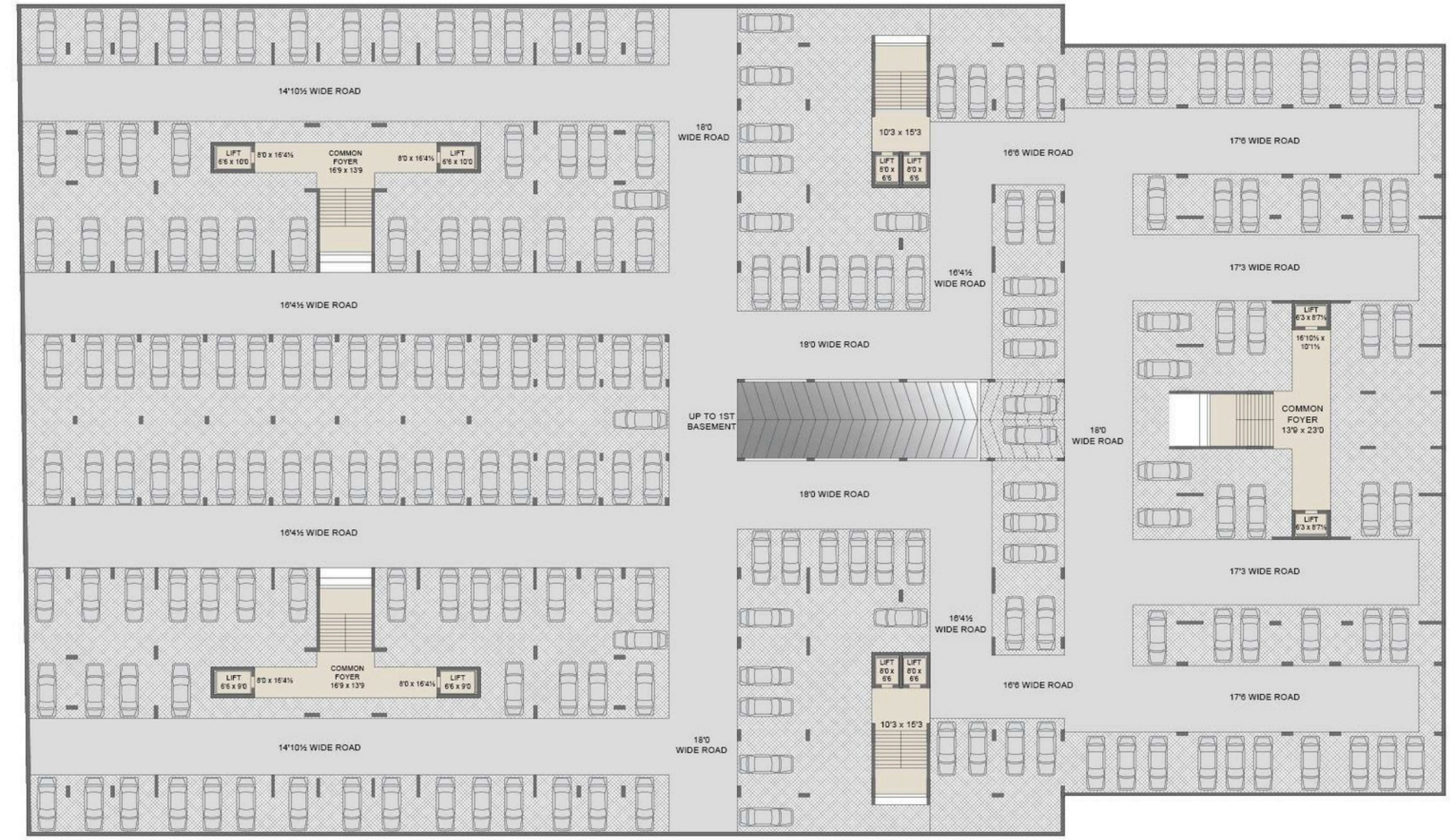
BASEMENT PLAN

UPPER



BASEMENT PLAN

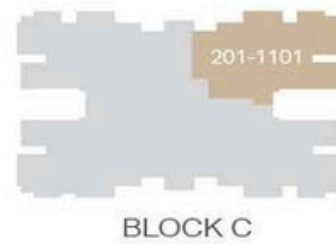
LOWER





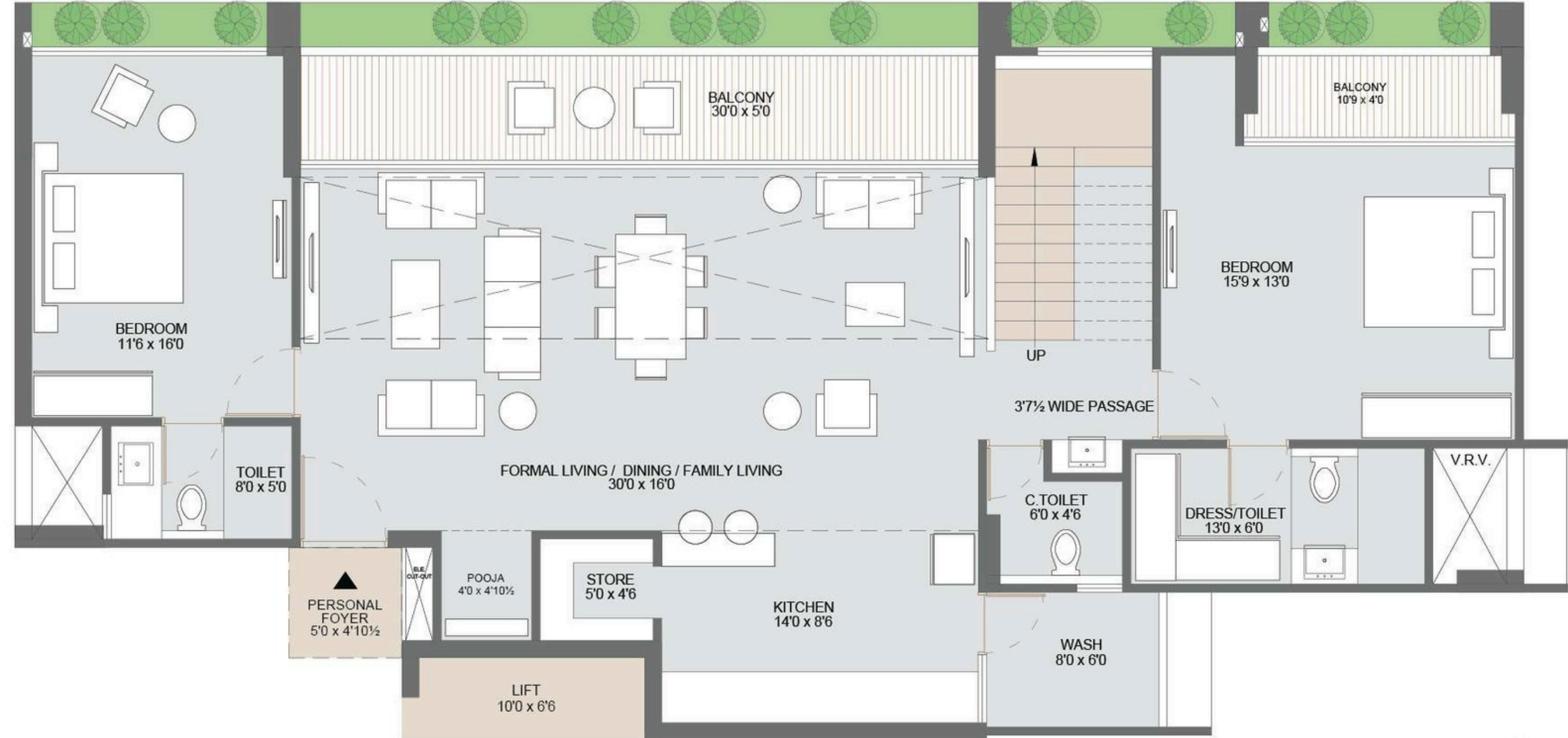
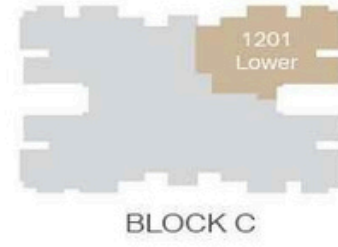
3 BHK

UNIT PLAN (BLOCK C & D)



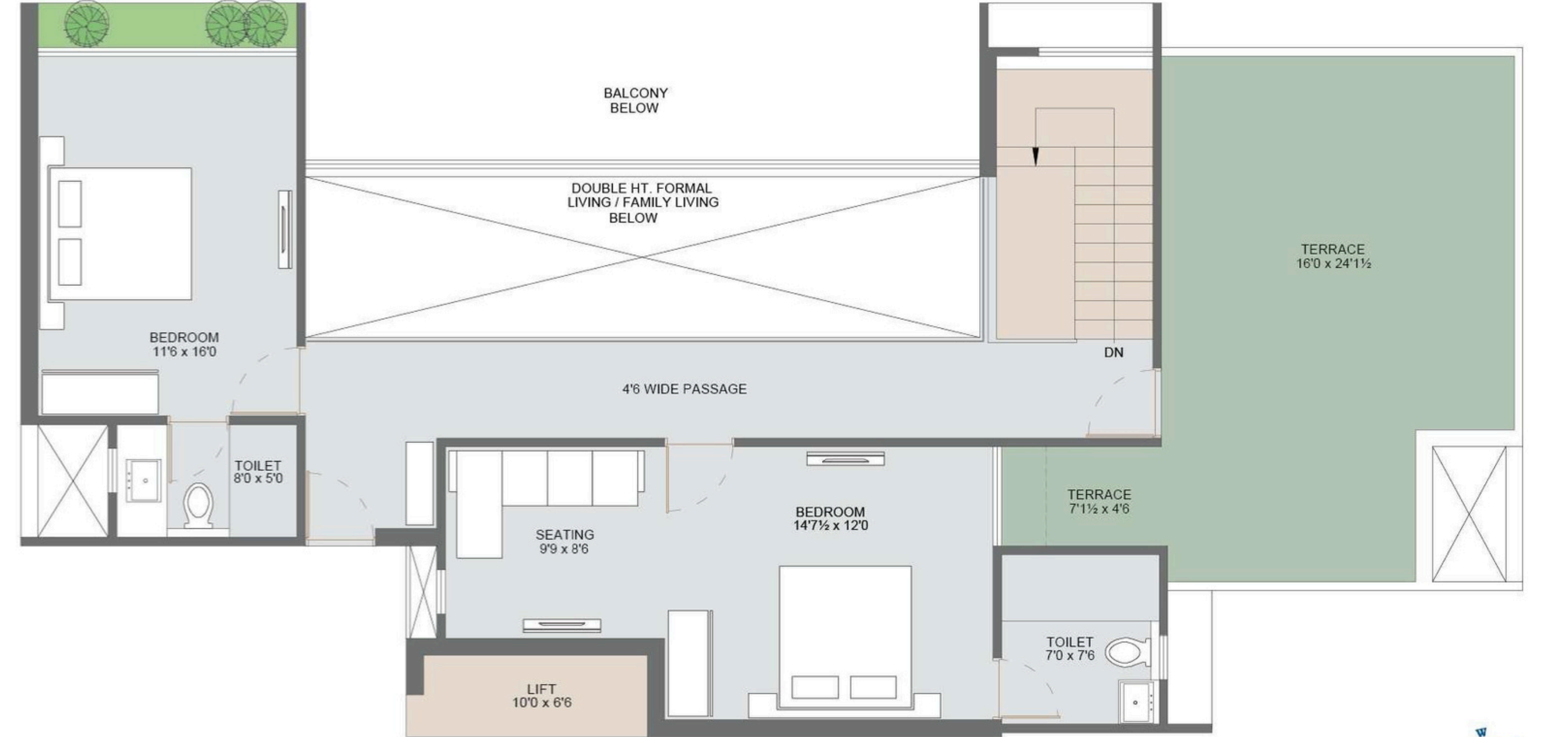
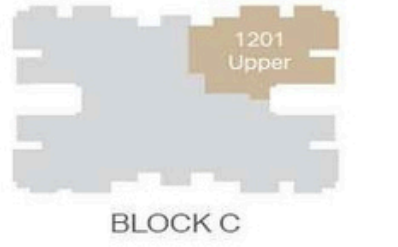
4 BHK

SKYDECK DUPLEX PENTHOUSE LOWER (12TH)
UNIT PLAN (BLOCK C & D)



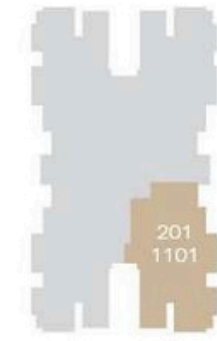
4 BHK

SKYDECK DUPLEX PENTHOUSE UPPER (13TH)
UNIT PLAN (BLOCK C & D)



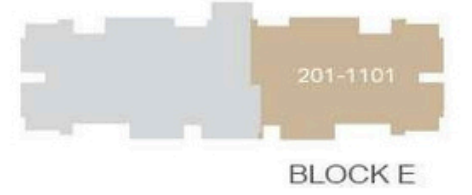
4 BHK

UNIT PLAN (BLOCK A)



4 BHK

UNIT PLAN (BLOCK B & E)



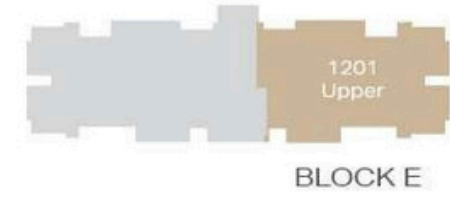
4 BHK

SKYDECK DUPLEX PENTHOUSE LOWER (12TH)
UNIT PLAN (BLOCK B & E)



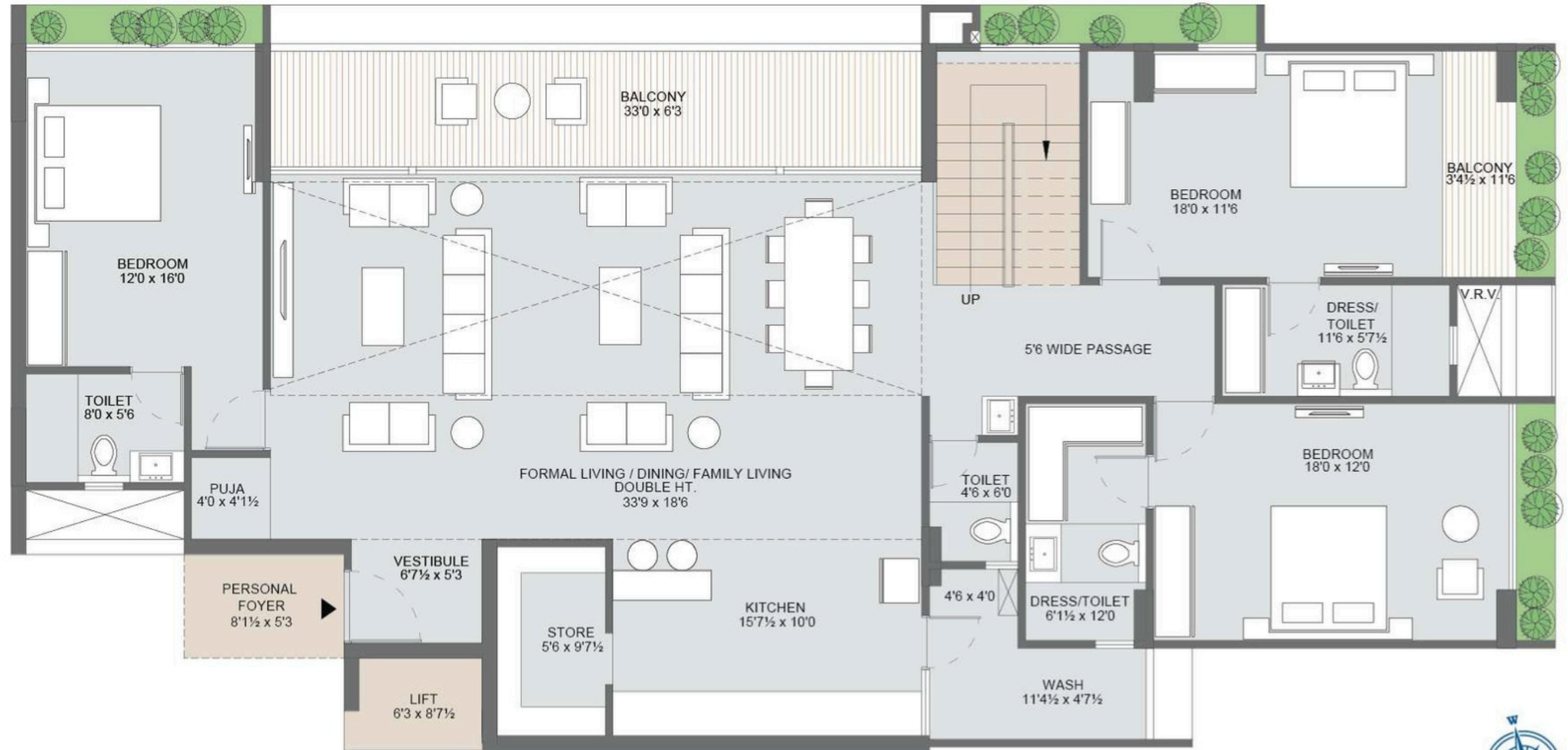
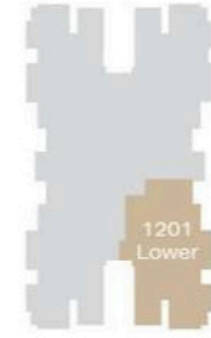
4 BHK

SKYDECK DUPLEX PENTHOUSE UPPER (13TH)
UNIT PLAN (BLOCK B & E)



5 BHK

SKYDECK DUPLEX PENTHOUSE LOWER (12TH)
UNIT PLAN (BLOCK A)



5 BHK

SKYDECK DUPLEX PENTHOUSE UPPER (13TH)
UNIT PLAN (BLOCK A)

